




# Ameri-Brand Products Inc

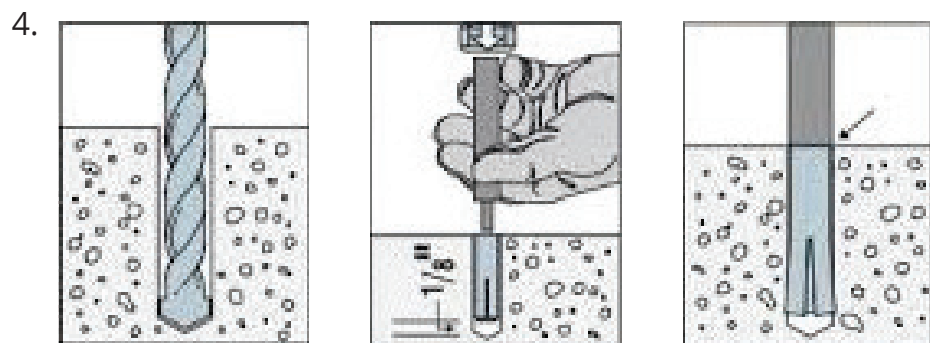
## Dome Anchorage at Deck

1.  RM38 or RL38 Multi-Set Drop in Expansion Anchor. 1/2" OD. 3/8-16 Internal Threads with Minimum 1-5/8" Min Embedment. Zinc plated steel.

2.  1" Shank x 3/8"-16 Threaded Eye Bolt. 5/16" Diameter Zinc plated steel. Apply Corrosion Resistant Grease on threads during installation.



Anchor Setting Tool.  
(provided)



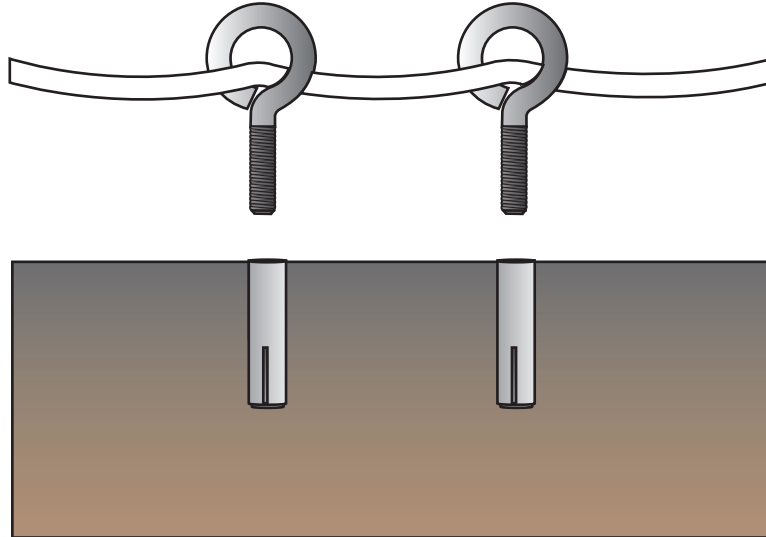
Drill holes with 1/2" Masonry bit using Hammer-Drill / Roto-Hammer to a Min. Depth of 1-5/8". Measure anchors provided to establish exact hole depth required. When installed, Anchors to be Flush with Pool Deck. Set Anchors.



Plastic Coated Corrosion Resistant Aircraft Cable Embedded into 4 layer Reinforced Hem on the Dome.



6.



Cable in base hem of dome is Exposed in the Field at Specified Locations via Vertical Incisions approx. 2" High. Cable Attaches into Installed Eye Bolts. Compress Eye Bolts to Secure Cable.

**Ameri-Brand Products Inc**

4619 Olive Hwy.  
Oroville, CA. 95966

**800-982-6966**

www.ameri-brand.com • info@go-ab.com

Spec-AD-037  
rev-2-12-2021 TJM